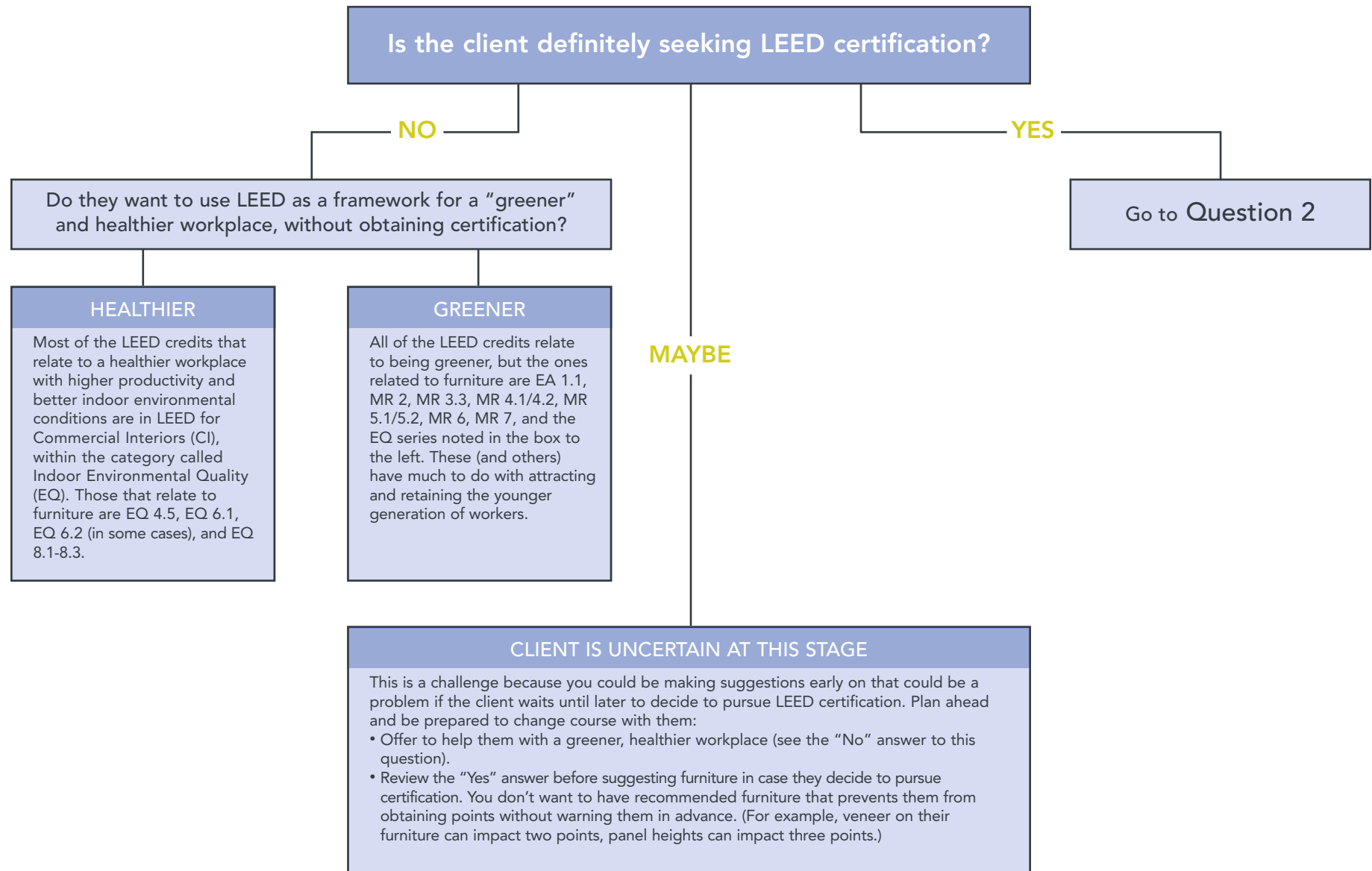


# LEED®/Green Project Decision Tree

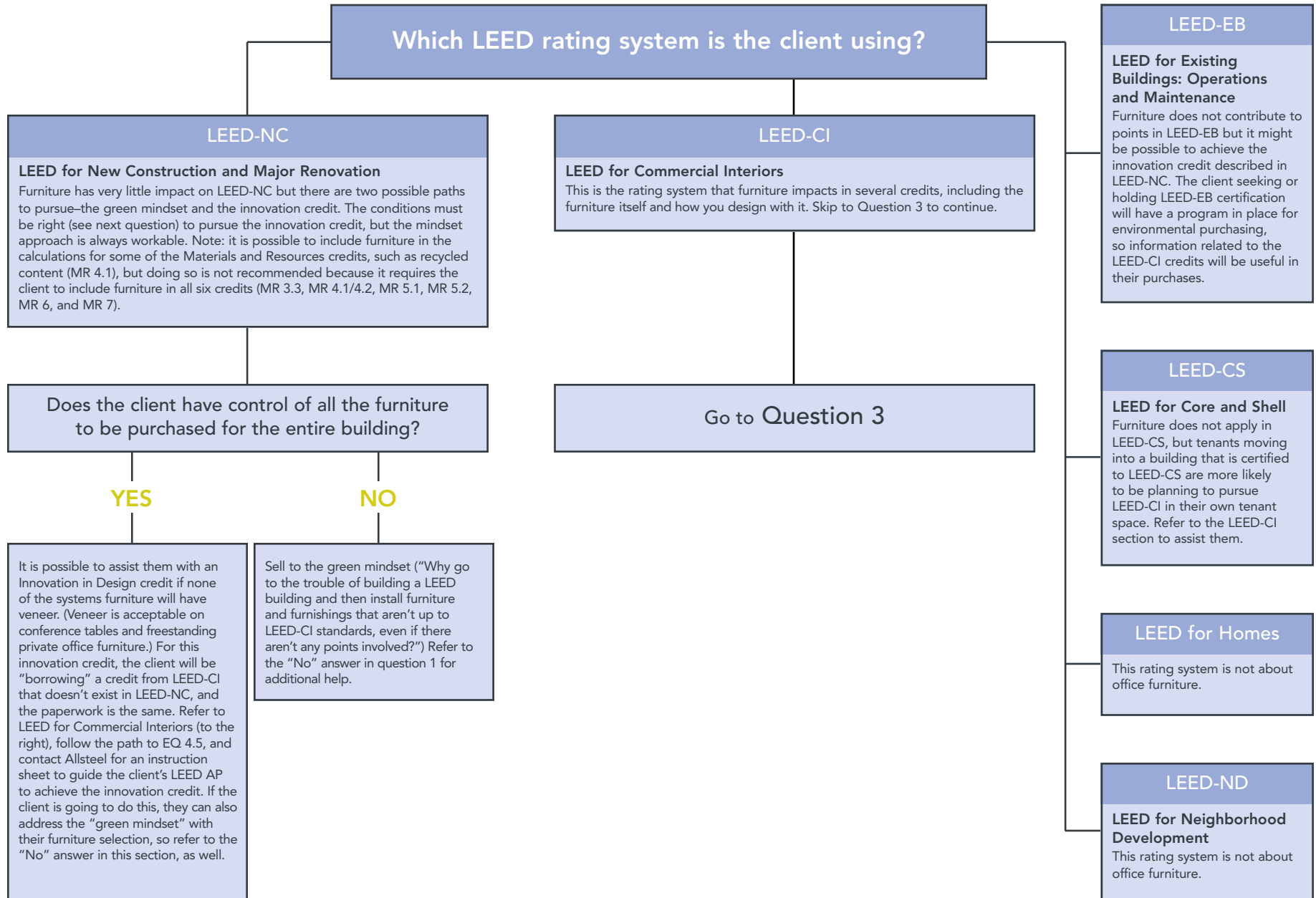
## The Role of Office Furniture

Use this process to find answers, instructions, and supporting documents for LEED projects. As you answer each question, you will be pointed toward the solutions you need. If you reach Question 3 and need assistance to complete the LEED online template for one or more credits, contact an Allsteel sales member, a LEED AP, or an A&D Specialist for help. They have access to a series of instruction pages for the credits related to office furniture.

### Question 1



## Question 2



### Question 3

## Can I have your LEED-CI checklist?

This should be your first question to the client seeking LEED-CI certification, explaining that you can provide better assistance in suggesting furniture if you know which credits they are planning to pursue. Once you know which credits they are seeking or considering seeking, contact an Allsteel representative to obtain instructions for help with the appropriate credits. If the client won't provide you a checklist, you'll have to ask them if they plan to seek any of the credits where they are listed and described below.

Please note:

- If the client is seeking EQ 4.5, avoid using veneer on their systems furniture at this time.
- If the client is seeking EQ 8.1-8.3, you will have to be careful about furniture height and layout in relation to windows, especially with EQ 8.3.

LEED templates and instruction sheets for completing them are available through your Allsteel representative for the following LEED-CI credits:

Energy and  
Atmosphere (EA)  
1.1 and 1.2

Materials and  
Resources (MR)  
2.1, 3.3, 4.1/4.2, 5.1,  
5.2, 6, 7

Indoor Environment  
Quality (EQ)  
4.5, 6, 8.1/8.2, 8.3

