



HON

F³[™]
Seating

ESSENTIAL COMFORT
THROUGH FIT,
FORM, AND FUNCTION



MID-BACK WORK CHAIR
With upholstered back

What Makes Work Chairs Work?

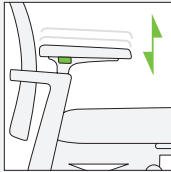
People who spend their workdays sitting down need chairs that feel good—and not just for the first few minutes of the day. Comfort needs to last. That means work chairs not only need to fit, but they also need to function intuitively, supporting shifting postures throughout the day.

Fit, form, and function. F³ seating from The HON Company has it all worked out. Unique materials and simple adjustments adapt the fit for people of all shapes and sizes. The responsive carriage keeps the seat level and the chair stable as the backrest reclines. And F³'s attractive, contemporary form projects a functional elegance that complements any office décor.

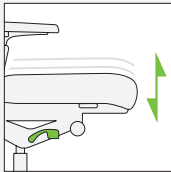
INTUITIVE ADJUSTMENTS



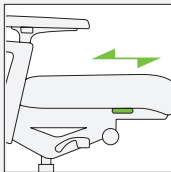
ARM WIDTH
Accommodates people of various sizes by moving arms in or out from the seat.



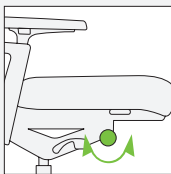
ARM HEIGHT
Arms move up or down to support your forearms comfortably and lessen stress on your shoulders.



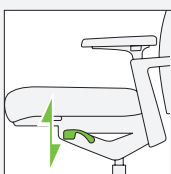
SEAT HEIGHT
Allows you to adjust the seat to a height where your feet are flat on the floor and your upper legs are properly supported.



SEAT GLIDE
Controls depth of the seat so your upper legs are properly supported and leg circulation is unimpeded.



TILT TENSION
Increases (pull out knob and turn forward) or decreases (back) the support you feel as you lean back.



TILT LOCK
Fixes the tilt in one of four positions—one forward, three reclining—to support different tasks.

FIT THAT ADAPTS

If people don't know how to "work" their work chair, they're likely to use it under less than ideal conditions. A seat too high or tilt tension too tight can restrict circulation and increase stress on the body. That's why F3's ergonomic adjustments are located where they can be accessed from a seated position. One-time adjustments for seat height, seat depth, arm height, arm width, and tilt tension make it easy to personalize the fit.



MID-BACK WORK CHAIR
With ilira®-stretch mesh back



GUEST CHAIR
Armless with glides



LOW-BACK WORK CHAIR
Available with upholstered back only



GUEST CHAIR
With arms and casters

FUNCTION THAT RESPONDS

F³'s smooth, synchronized tilt motion supports seated bodies in every position from upright to reclined, keeping the seat level and the user balanced in any posture. The tilt mechanism can be tightened or loosened with just a couple turns of a conveniently located knob. Opt for the mesh back and enjoy the breathable, form-cradling support ilira-stretch delivers.

BACK-FRIENDLY MESH

Like a trusted teammate, ilira-stretch has your back. This multi-directional stretch knit retains its spring sit after sit to remain strong and supportive over time. Nonabrasive and soft to the touch, ilira-stretch is as easy on your clothing as it is on your body.

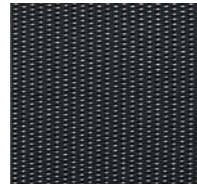




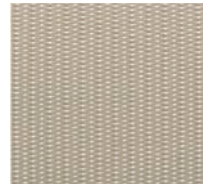
FORM THAT INVITES

The back, seat, and arms of F³ converge in a refined, integrated form that attracts the eye as it welcomes the body. Pair an ilira-stretch back in one of four versatile colors with a seat upholstered in one of HON's beautiful textiles for an airy, fashion-forward look. A traditional upholstered back dresses up F³ for private offices or more conservative workplaces.

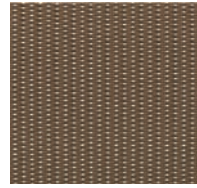




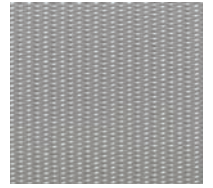
BLACK



SANDSTONE



EARTH



SLATE

VERSATILE COLORS

With a choice of four mesh colors, not only does the F³ ilira-stretch back fit people better, it fits in better, too.





PRODUCTS, MATERIALS, AND FINISHES SHOWN:

Front A: F³ mid-back work chair with ilira-stretch mesh back in Black.

Page 4 B: F³ mid-back work chairs with (left to right): ilira-stretch mesh back in Black and seat in Focus Merlot, ilira-stretch mesh back in Sandstone and seat in Focus Carbon, ilira-stretch mesh back in Earth and seat in Focus Safari, and ilira-stretch mesh back in Slate and seat in Focus Regatta.

Pages 4-5 C: F³ mid-back work chairs with ilira-stretch mesh backs in Slate and seats in Division Marsala. Abound® workstation with fabric tiles in Glow Stainless Steel, Platinum Metallic finish, and laminate worksurfaces in Shadow Zephyr. Flagship® storage in Platinum Metallic.

Page 6 D: F³ mid-back work chairs with ilira-stretch mesh backs in Black and seats in

Esplanade Lawn. Initiate® workstation with fabric panels in Twigs Sycamore and Twigs Magnolia, Charcoal finish, and laminate worksurfaces in Natural Maple. Flagship storage tower and mobile pedestal in Charcoal. Pedestal seat in Esplanade Lawn.

Page 7 E: F³ low-back work chair in Focus Ivory. F³ guest chair with arms and casters in Focus Ivory. Arrive™ veneer workstation in Mahogany with frosted doors with silver frame, and Tackboard in Twilight Ethereal.

Back F: F³ mid-back work chairs with ilira-stretch mesh backs in Black and seats in Esplanade Lawn. Initiate workstation with fabric panels in Celestial Linen and Celestial Obelisk, Light Gray finish, and laminate work-surfaces in Shadow Zephyr.



the BIFMA sustainability standard



The HON Company
200 Oak Street
Muscatine, IA 52761
800.833.3964
hon.com

© 2011 The HON Company, Form No. H3837 (1/11)
HON, Abound, Flagship, and Initiate are registered trademarks of HNI Technologies, under license to The HON Company. F³ and Arrive are trademarks of The HON Company. ilira is a registered trademark of H.R. Rathgeber GmbH & Co. Indoor Advantage is a trademark of Scientific Certification Systems. level is a trademark of BIFMA International. Models, upholstery, and finishes are subject to change without notice.